

HOME

FLOORING

COLLECTION

Corkcomfort



Nature at your feet


WICANDERS®



Acrodur - Yours purely

Amorim Revestimentos, the world leader in cork flooring, and BASF, the renowned international chemical company, have merged their vast experience to create a highly innovative product for cork flooring and wall coverings.

Acrodur is the name of the new water-based binder developed by BASF, with unrivalled environmental performance. This binder reduces the level of non-green emissions (during manufacturing and after the installation of the final product) and fosters a more rational use of energy, without compromising the coverings' performance.

Acrodur is free of chemical substances such as phenol, formaldehyde or isocyanates that are usually present in similar products. **Wicanders'** association to BASF strengthens its sustainable and eco-efficient nature. With this revolutionary product, **Wicanders** not only promotes balance between economy and the environment but also provides perfect harmony between nature and the comfort of contemporary ambiances.

Truly sustainable development.....



Yours Purely,



Think green, choose Wicanders

Wicanders products underwent a detailed eco-efficiency study in 2007, carried out by the highly regarded chemical company, BASF.

The study, based on a comparative analysis with several other types of flooring, illustrated the excellent environmental performance of **Wicanders** products and its manufacturing process. Besides the smaller amounts of energy and raw materials required for the manufacturing process, these products actively contribute to reducing global warming, not only through their low emissions, but also due to cork's natural property of retaining CO₂.

This study also highlighted irrefutable advantages for the consumer. Cork's natural thermal insulation characteristics ensure that **Wicanders** products represent significant savings for the consumer in acclimatisation energy costs. Values that re-assure the excellence of **Wicanders** flooring and their impact on protecting the planet and the world economy.

Your future in good hands!

Wicanders is a truly sustainable brand! The starting point is a raw material that is extracted cyclically from the cork oak trees without ever damaging them. This raw material is then transformed into products of high added value while biodiversity, economic and social sustainability are simultaneously fostered.

Wicanders also looks out for your future! Its products retain CO₂, which would otherwise contribute to global warming. It is estimated that the Portuguese cork oak forest – montado – is responsible for retaining 5% of the country's annual CO₂ emission, representing 4.8 million tons per year.





Excellence in flooring



Amorim Revestimentos, a company of the Portuguese Amorim Group, with over 130 years of experience in selected cork products, has developed unique flooring and wall covering solutions throughout its history. Amorim Revestimentos sells its products in more than 51 countries and is known throughout the world as a pioneer in creating top-quality, groundbreaking solutions.

Reflecting a highly sustainable development, the Amorim Group developed a revolutionary process that is adapted to nature's rhythms. The first extraction of cork from the cork oak tree occurs only twenty-five years after planting, following which it is harvested in nine-year cycles, without ever damaging the tree in any way. This method allows the cork oak forest – montado - to fulfil its role of fixing CO₂, thus actively contributing to reduce global warming.

The regular extraction of cork is also a decisive contributor to sustainability: environmental (conserving biodiversity and preventing desertification), social (population settlement and jobs creation) and economic. The company's in-depth knowledge and respect for nature, its continuous investment in technological innovation and highly-specialised staff, have guaranteed its leading position in the international field. **Wicanders** has strengthened its existing cork products (**Corkcomfort**) and wood-on-cork products (**Woodcomfort**), by investing in new product lines such as vinyl (**Vinylcomfort**), linoleum (**Linocomfort**), and parquet (**Parquet**), towards a new phase marked by the evolution from a cork manufacturer to a flooring solutions company.

Cutting-edge technology, know-how, creativity and audacity are merged into an avant-garde approach inspired on nature's values.



Identity Tea

Classic Mutene



Meet the **Cork**comfort Sensations

Founded on the most advanced technological innovation and ongoing research of current trends and requirements, the new **Cork**comfort product line has allowed **Wicanders** to create a new flooring philosophy, revolutionising cork floors' traditional concept. **Cork**comfort brings to life ceramic, stone, metal and leather patterns, enhancing cork's role in interior design. New attributes emerge, as this collection reinterprets style, elegance and the sophistication of different materials. The result is an infinite pallet of remarkable surfaces with innovative dimensions (600 x 450 mm), allowing the creation of the most diverse range of environments, enriched by the unique qualities and visual elegance of cork. **Cork**comfort was also enhanced with advanced texturing, painting and bevelling processes that provide depth and intensity to any space, ensuring the versatility of any choice.

Corkcomfort starts out a new approach in decoration, in harmony with nature and human emotions.

Corkcomfort product line was shaped by a team of experts and trendsetters composed of designers, architects and marketers.

It is inspired on the inimitable patterns, textures and colours of nature. Alive with attractive compositions, this collection suits your lifestyle providing you with lively spaces to work or rest, and share them with others.

Choose your own nature





Rural elegance





Unique effects and nuances suggest the return to nature through spaces steeped in organic sensations. A timeless comfort that returns pure elegance and sophistication to daily life.



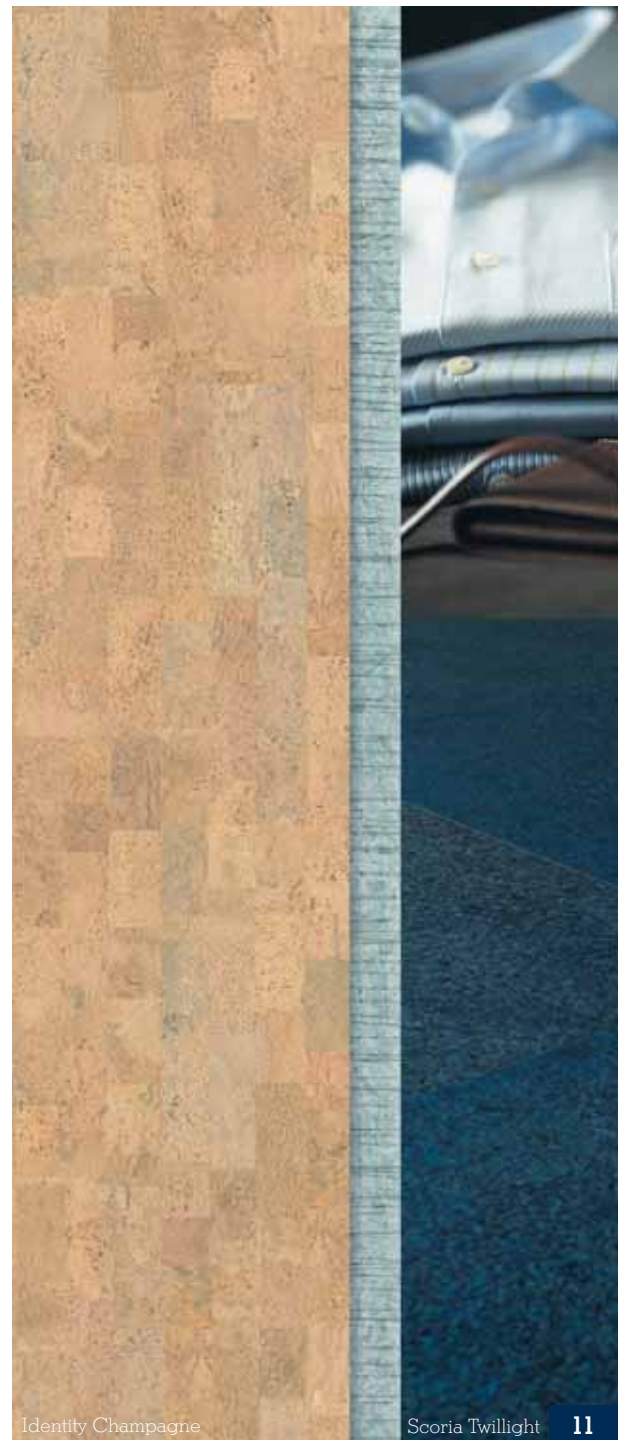


Luminous poetry





The smoothness of a natural floor combined with romantic patterns encourages nostalgia and refined luxury, sketching out poetic atmospheres leading us into dreams.





Metallic audacity





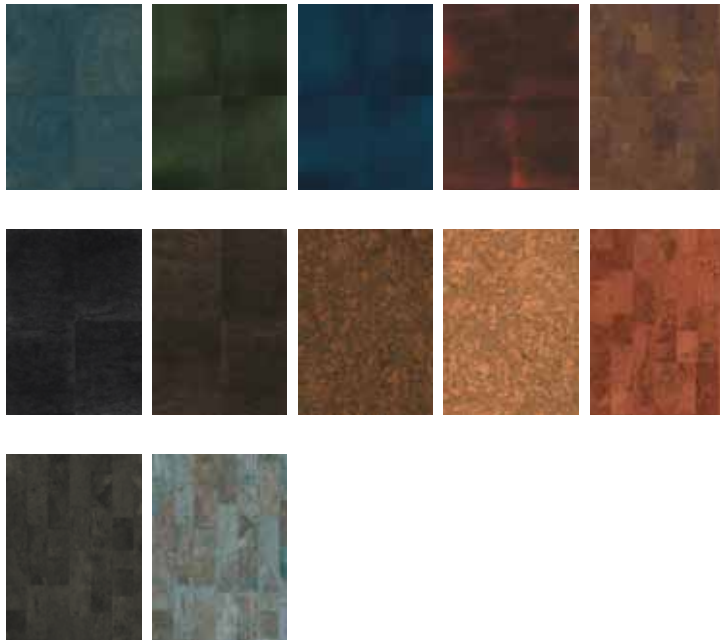
Extravagant designs inspired by fashion trends provide metallic looks and exceptional optical effects. Atmospheres intensified by dark shades, combining deep and captivating colours, are draped in glamour, creating perfect scenarios.





Urban expressions





Surfaces with strong textures give shape to expressive ambiances full of contrasts and vibrant colours. Floors that represent an urban and trendy identity that challenges even the most daring personality.





Explore our essence



THERE 'S NO PLACE LIKE HOME

Your home should be a space of internal balance, a place of pleasant re-discovery after a challenging day's work. Cork's natural properties make it an excellent sound insulator, attenuating the sounds that disturb moments of relaxation and family sharing.

A WARM RESORT

We take care of the cork oak forests (montado) and from them take the essence of comforting atmospheres. Cork, a remarkable thermal insulator, inspires tranquil and comfortable environments, granting energy costs savings.

Like a hug from nature, your home becomes an enveloping retreat that exhales comforting and soothing heat for the daily renewal of body and mind.

EASY TO WALK ON

It is a proven fact that hard surfaces worsen feet and back injuries in urban societies. A study of the **Cork**comfort products, carried out by Valencia Biomechanics Institute, illustrates their effective biomechanical performance and influence on the balanced posture of the human body.

Wicanders products are sufficiently soft to reduce impact on the joints and back and sufficiently stable to reduce fatigue, therefore promoting ideal conditions for a healthy life in a comfortable and enveloping environment.

A GIFT FROM NATURE

Cork is born from nature. It is one of the most complete materials for the creation of safe, comfortable and inspiring environments. **Cork**comfort, adapted to the needs of modern society, reinterprets cork's applications, offering revolutionary flooring based on quality, innovative design and cutting-edge technology.

Perfect solutions that live in harmony with nature and your lifestyle.





PROTECT THE FUTURE OF YOUR LOVED ONES

The sustainable feature of **Cork**comfort product line represents a fundamental contribution to the preservation of the planet, since it plays an important role in reducing global warming. The FSC (Forest Stewardship Council) certification for forest management system is an unquestionable proof, along with other certifications, of the sustainability of such coverings, reinforcing their excellence. A commitment undertaken to nature, on behalf of a protected future for you and your loved ones.

LIVE AN INTELLIGENT LIFE

Corkcomfort product line is recyclable and environmentally friendly, positively contributing to CO₂ fixation. A new water-based binder – Acrodur - has been developed to reinforce its environmental component, reducing the level of non-green emissions. Its insulating properties also generate energy savings for consumers.

It is the ideal product for those who are truly nature lovers.

OUTSTANDING DESIGNS FOR A PERFECT CHOICE

The vibrant designs of **Cork**comfort product line, which are available in a wide range of textures, colours and finishes, create the most diverse and surprising effects, adapted to each personality and lifestyle.

Classic or extravagant, elegant or trendy, the combinations offer total freedom in the creation of tailor-made decorations.

FREE YOUR WISHES

Corkcomfort floors are highly resistant and safe thanks to their anti-slip and scratch resistant properties. These properties provide environments for sharing and living life fully, ensuring that such floors remain good looking over the years. Feel free to live your space.

MAKE YOUR LIFE EASIER

Quick and easy to install, **Cork**comfort flooring transforms your environment without interfering with your routine. The functional, hygienic and easy maintenance of this flooring make it the ideal choice for a relaxing and safe day-to-day life.

Your loved ones' health and yours is protected, leaving you without concerns and giving you more time to enjoy the sensations of an environment designed exactly as you wished.



Corkcomfort visuals



Slate Caffè



Slate Olive



Slate Moccaccino



Linn Cioccolato



Linn Sepia



Originals Natural



Originals Harmony



Originals Character



Originals Shell



Originals Rhapsody



Originals Symphony



Originals Country



Originals Accent



Originals Dawn

Corkcomfort visuals



Slate Tawny



Slate Arctic



Linn Moon



Linn Blush



Nuances Latte



Personality Moonlight



Personality Timide



Personality Champagne



Personality Eden



Identity Moonlight



Identity Timide

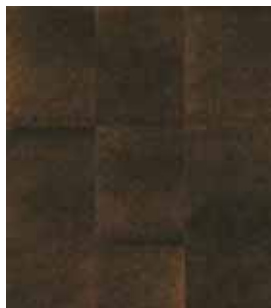


Identity Champagne



Identity Eden

Corkcomfort visuals



Petra Copper



Petra Taupe



Petra Negro



Pebbles Storm



Pebbles Metallic



Pebbles Fog



Pebbles Autumn



Nuances Castagna



Nuances Mele



Personality Spice



Personality Tea



Identity Tea



Identity Silver



Identity Spice

Corkcomfort visuals



Pebbles Rain



Scoria Pine



Scoria Twilight



Scoria Burgundy



Slate Eclipse



Slate Algae



Personality Chestnut



Personality Caramel



Identity Chestnut



Identity Cool Crimson



Identity Nightshade



Identity Secrets

Product selector

| | | Corkcomfort Floating WRT | | Corkcomfort Glue-down WRT | | Corkcomfort Glue-down Sanded | Corkcomfort Glue-down PU | | | Corkcomfort Floating HPS | Corkcomfort Glue-down HPS |
|-----------------------|---------|--------------------------|-----------------|---------------------------|-----------------|------------------------------|--------------------------|-----------------|-----------------|--------------------------|---------------------------|
| Dimension | mm | 905x295 | 605x445 | 600x300 | 600x450 | 600x300 | 600x450 | 600x300 | 600x300 | 605x445 | 600x450 |
| | inches | 35.5/6x11.5/8 | 23.13/16x17.1/8 | 23.5/6x11.13/16 | 23.5/6x17.23/32 | 23.5/6x11.13/16 | 23.5/6x17.23/32 | 23.5/6x11.13/16 | 23.5/6x11.13/16 | 23.13/16x17.1/8 | 23.5/6x17.23/32 |
| Thickness | mm | 10.5 | 10.5 | 4 | 4 | 4 | 4 | 6 | 6 | 12 | 3.2 |
| | inches | 13/32 | 13/32 | 5/32 | 5/32 | 5/32 | 5/32 | 2/8 | 2/8 | 15/32 | 1/8 |
| Natural Embossing | No | No | No | No | No | No | No | No | No | Yes | Yes |
| Beveling | No | No | No | No | No | No | 4 sides | 4 sides | No | 4 sides | No |
| Reference | | | | | | | | | | | |
| Originals Natural | O801007 | | | RV10003 | | RN10001 | | | | | |
| Originals Harmony | O821005 | | | RV11007 | | RN11002 | | DN11004 | DN11003 | | |
| Originals Character | O822002 | | | RV16004 | | RN16001 | | | | | |
| Originals Shell | O824003 | | | RV14004 | | RN14002 | | | DN10003 | | |
| Originals Rhapsody | O825005 | | | RV12007 | | RN12002 | | | DN12003 | | |
| Originals Symphony | O830003 | | | RV20002 | | | | | DN20003 | | |
| Originals Country | O832004 | | | RV02012 | | | | | DN02006 | | |
| Originals Accent | O841002 | | | O941001 | | RN17001 | | | DN17003 | DN17002 | |
| Originals Dawn | O849003 | | | RV13006 | | | | | DN13003 | DN13001 | |
| Identity Moonlight | 1801002 | | | 1901007 | | | | | 1901002 | | |
| Identity Timide | 1802002 | | | 1902007 | | | | | 1902002 | | |
| Identity Silver | 1803002 | | | 1903007 | | | | | 1903002 | | |
| Identity Champagne | 1805002 | | | 1905007 | | | | | 1905002 | | |
| Identity Eden | 1806002 | | | 1906005 | | | | | 1906002 | | |
| Identity Spice | 1808002 | | | 1908007 | | | | | 1908002 | | |
| Identity Tea | 1810002 | | | 1910005 | | | | | 1910002 | | |
| Identity Cool Crimson | 1814002 | | | 1914006 | | | | | 1914002 | | |
| Identity Secrets | 1819002 | | | 1919005 | | | | | 1919002 | | |
| Identity Nightshade | 1821002 | | | 1921006 | | | | | 1921002 | | |
| Identity Chestnut | 1832002 | | | | | | | | | | |
| Personality Moonlight | P801002 | | | P901007 | | | | | P901003 | | |
| Personality Timide | P802002 | | | P902007 | | | | | P902003 | | |
| Personality Champagne | P805002 | | | P905007 | | | | | P905003 | | |
| Personality Eden | P806002 | | | P906005 | | | | | P906003 | | |
| Personality Spice | P808002 | | | P908006 | | | | | P908003 | | |
| Personality Tea | P810002 | | | P910004 | | | | | P910003 | | |
| Personality Chestnut | P832002 | | | | | | | | | | |
| Personality Caramel | P833002 | | | | | | | | | | |
| Nuances Latte | | C82H001 | | C92H001 | | | | C92H002 | | | |
| Nuances Mele | | C82I001 | | C92I001 | | | | C92I002 | | | |
| Nuances Castagna | | C82J001 | | C92J001 | | | | C92J002 | | | |
| Linn Moon | | C81N001 | | C91N001 | | | | C91N002 | | | |
| Linn Blush | | C81O001 | | C91O001 | | | | C91O002 | | | |
| Linn Cioccolato | | C81L001 | | C91L001 | | | | C91L002 | | | |
| Linn Sepia | | C81M001 | | C91M001 | | | | C91M002 | | | |
| Slate Tawny | | C81E001 | | C91E001 | | | | C91E002 | | | |
| Slate Arctic | | C81D001 | | C91D001 | | | | C91D002 | | | |
| Slate Moccaccino | | C81C001 | | C91C001 | | | | C91C002 | | | |
| Slate Caffè | | C81A001 | | C91A001 | | | | C91A002 | | | |
| Slate Olive | | C81B001 | | C91B001 | | | | C91B002 | | | |
| Slate Algae | | C81F001 | | C91F001 | | | | C91F002 | | | |
| Slate Eclipse | | C81G001 | | C91G001 | | | | C91G002 | | | |
| Pebbles Rain | | | | | | | | | | C11T001 | C21T001 |
| Pebbles Storm | | | | | | | | | | C11W001 | C21W001 |
| Pebbles Metallic | | | | | | | | | | C11V001 | C21V001 |
| Pebbles Fog | | | | | | | | | | C11U001 | C21U001 |
| Pebbles Autumn | | | | | | | | | | C11S001 | C21S001 |
| Petra Copper | | C81P001 | | C91P001 | | | | C91P002 | | | |
| Petra Taupe | | C81Q001 | | C91Q001 | | | | C91Q002 | | | |
| Petra Negro | | C81R001 | | C91R001 | | | | C91R002 | | | |
| Scoria Pine | | C81K001 | | C91K001 | | | | C91K002 | | | |
| Scoria Twilight | | C81I001 | | C91I001 | | | | C91I002 | | | |
| Scoria Burgundy | | C81J001 | | C91J001 | | | | C91J002 | | | |

Technical Solutions & Warranty

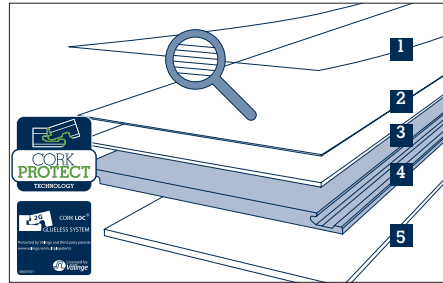
FLOATING FLOOR

Xtreme WRT
WEAR RESISTANCE TECHNOLOGY

WARRANTY 15 YEARS
Home

WARRANTY 5 YEARS
Commercial

Xtreme WRT varnish is the logical and consequent development of a flooring solution that meets in all aspects the requirements of even the most demanding customers. Xtreme WRT represents the strongest protection of the natural features of cork flooring.



- 1.0 XtremeWRT Varnish
- 1.1 Top coat
- 1.2 2nd ceramic layer
- 1.3 Sand sealer
- 1.4 1st ceramic layer
- 1.5 filler
- 1.6 Adhesion promoter
- 2.0 Genuine cork veneer
- 3.0 Flexible and insulating cork layer
- 4.0 HDF - high density fibreboard with CORKLOC®
- 5.0 Integrated insulating cork underlay

GLUE DOWN FLOOR

Xtreme WRT
WEAR RESISTANCE TECHNOLOGY

WARRANTY 15 YEARS
Home

WARRANTY 5 YEARS
Commercial

GLUE DOWN FLOOR

PU
SURFACE FINISHING

WARRANTY 10 YEARS (a)

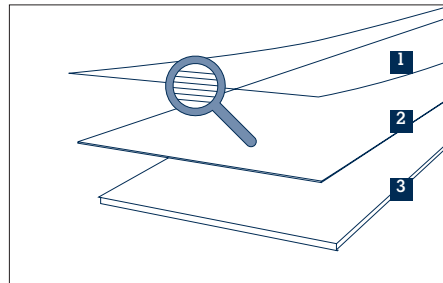
WARRANTY 5 YEARS (b)

GLUE DOWN FLOOR

SANDED

WARRANTY 10 YEARS (c)

WARRANTY 5 YEARS (d)



- 1.0 XtremeWRT Varnish
- 1.1 Top coat
- 1.2 2nd ceramic layer
- 1.3 Sand sealer
- 1.4 1st ceramic layer
- 1.5 filler
- 1.6 Adhesion promoter
- 2.0 Genuine Cork veneer
- 3.0 Agglomerated cork

(a) Must be varnished on-site with minimum 1-2 coats of W-700 or W-2000 or another recommended varnish • (b) Must be varnished on-site with minimum 1-2 coats of W-2000 or another recommended varnish for this level of use (see recommendation table in the packaging) • (c) Must be varnished on-site with minimum 3 coats of W-700 or W-2000 or another recommended varnish • (d) Must be varnished on-site with minimum 3 coats of W-2000 or another recommended varnish for this level of use (see recommendation table in the packaging).

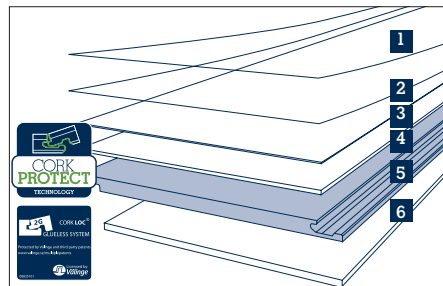
FLOATING FLOOR

HIGH Performance Surface

WARRANTY 25 YEARS
Home

WARRANTY 15 YEARS
Commercial

If you are looking for a flooring solution that meets the highest durability standards, HPS is the perfect choice. Supplied with a hard wearing surface layer for durability and resilience, this is ideal for high traffic residential areas, commercial and public spaces.



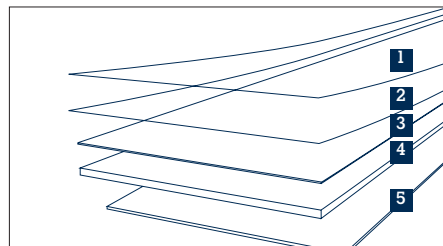
- 1.0 HPS varnish
- 2.0 Hard wearing surface
- 3.0 Genuine cork veneer
- 4.0 Flexible and insulating cork layer
- 5.0 HDF - high density fibreboard with CORKLOC®
- 6.0 Integrated insulating cork underlay

GLUE DOWN FLOOR

HIGH Performance Surface

WARRANTY 25 YEARS
Home

WARRANTY 15 YEARS
Commercial



- 1.0 HPS varnish
- 2.0 Hard wearing surface
- 3.0 Genuine cork veneer
- 4.0 Cork agglomerate core
- 5.0 Vinyl backing layer

Technical Data Sheet

| Test | Standard | Unit | Corkcomfort Floating WRT | Corkcomfort Floating HPS | Corkcomfort Glue-down PU | Corkcomfort Glue-down WRT | Corkcomfort Glue-down HPS |
|--------------------------------|-------------------------------------|--------------------|--|--|---|---|---|
| Level of use | EN 685 | Class | 23 | 23 | 23 (a) | 23 | 23 |
| Domestic | | | | | | | |
| Commercial | | | 31 | 33 | 31 (b) | 31 | 33 |
| Industrial | | | — | 42 | — | — | 42 |
| UPEC Rating | NF | Class | — | — | — | — | U3P3E2C2 |
| General properties | EN 12104 / EN 655 / EN 14085 | | | | | | |
| Dimensions | EN 427 / EN 428 | mm | 905x295x10,5 605x445x10,5 | 905x295x12 605x445x12 | 600x300x6 600x450x4 | 600x300x4 600x450x4 | 300x300x3,2 600x300x3,2 600x450x3,2 |
| | | Inches | 35.5/8x11.5/8x13/32 23.13/16x17.1/8x13/32 | 35.5/8x11.5/8x15/32 23.13/16x17.1/8x15/32 | 23.5/8x11.13/16x2/8 23.5/8x17.23/32x5/32 | 23.5/8x11.13/16x5/32 23.5/8x17.23/32x5/32 | 11.13/16x11.13/16x1/8 23.5/8x11.13/16x1/8 23.5/8x17.23/32x1/8 |
| Wear layer thickness | EN 429 | mm | — | 0,50 | — | — | 0,50 |
| Apparent density | EN 672 | Kg/m ³ | 760 | 825 | >500 | >500 | >800 |
| Mass per unit area | EN 430 | g/m ² | 8000 | 9900 | 3000 | 2300 | 2700 |
| Dimension stability | EN 434 / EN 669 | % | EN 669 Direction 1: 0.00 Direction 2: 0.01 | EN 669 Length: 0,04 Width: -0,02 | EN 434: Direction 1: - 0,75 Direction 2: - 0,74 | EN 434: Direction 1: - 0,86 Direction 2: - 0,80 | EN434 Direction 1: - 0,07 Direction 2: - 0,12 |
| Gloss | Glossmeter | degrees Gardner | 10° ± 3 | 10° ± 3 | — | 10° ± 3 | 10° ± 3 |
| Safety properties | | | | | | | |
| Fire resistance | DIN 4102-1 | Class | — | B1 | B2 | — | B1 |
| | DS/INSTA 414 | Pass/fail | — | — | — | — | Passes |
| | UNE 23.727-90 | Class | — | — | — | — | M3 |
| | SS 024825 (NT Fire 007) | Class | — | — | — | — | G |
| | NF | Class | — | — | M3 | M3 | M3 |
| | EN13501-1 | Class | Cfl s1 | Bfls1 | Cfls1 | Dfls1 | Cfls1 |
| C.S.E. RF 2/75/A-RF 3/77 | Class | — | 1 | — | — | 1 | |
| Surface flammability | ASTM D2859 | Pass/fail | — | Passes | Passes | Passes | Passes |
| Critical radiant flux | ASTM E 648-3 | Watts/ Square Cm | .23 | 0,83 | .53 | — | 0,40 |
| Specific optical density | ASTM E 662-03 | Density | Flaming: 199 / Non flaming: 177 | Flaming: 393,8 / Non flaming: 438,3 | Flaming: 148 / Non flaming: 264 | Flaming: 145,8 / Non flaming: 287,43 | Flaming: 279,3 / Non flaming: 386,4 |
| Slip classification | EN 14041 | Class | DS | DS | — | DS | DS |
| Sliding coefficient | EN 13893 | Coeff. | 0,57 | — | — | 0,57 | — |
| | EN DIN 51131 | | 0,47 | — | — | 0,47 | — |
| Slippery safeness | Dresden parameters | Class | Safe | — | — | Safe | — |
| | DIN 51130 | Class | R-10 | R-10 | — | R-10 | R-10 |
| Static coefficient of friction | ASTM C1028-89 | Coeff. | Dry: 0.65; Wet: 0.69 | Dry: .69; Wet: .94 | Dry: .69; Wet: .79 | Dry: 0.65; Wet: 0.69 | Dry: .76; Wet: .92 |
| Additional properties | | | | | | | |
| Impact sound reduction | ISO 140-8 | dB | 16 | 18 | 21 | 16 | 9 |
| Step sound | NF S 31 - 074 | dB | 78 | 78 | — | — | — |
| NRC Noise reduction class | ASTM C423-90a | dB | — | 0.10 | 0.05 | 0.10 | 0.05 |
| STC sound transmission class | ASTM E413-87 | dB | 54 | 54 | 53 | 53 | 53 |
| IIC Impact insulation class | E492-04 | dB | 58 | 59 | 57 | 56 | 53 |
| Surface noise radiation | ANSI S12.32-1990 | dBA | — | 92.1 | 87.7 | 87,5 | 89.6 |
| Thermal resistance | DIN 52612 | m ² K/W | — | 10°C: 0,1099 | 10°C: 0,097 | 10°C: 0,0642 | 10°C: 0,0393 |
| | ASTM C-518-04 | (R-value) | — | 0,57 | 0,50 | 0,29 | 0,16 |
| | EN 12667 | m ² K/W | 0,102 | 0,114 | 0,073 | — | 0,027 |

- (a) Must be varnished on-site with minimum 12 coats of W700 or W2000 or another recommended varnish
 (b) Must be varnished on-site with minimum 12 coats of W2000 or another recommended varnish for this level of use
 (c) No changes of the wear layer nor delamination
 (d) No damage of the wear layer
 (e) Rate 6 of the blue scale; rate 4 of the gray scale
 (f) Several commercial and domestic products tested (30 minutes and 2 hours contact). Only Acetone (100%) and Ethyl alcohol have caused a very slight alteration of the surface. All the others have caused no alteration.
 (g) The following products were tested (60 min and 24 hours ratings): 5% Acetic Acid, 70% Isopropyl Alcohol, Mineral Oil, 5% Sodium Hydroxide, 5% Hydrochloric Acid, 5% Ammonia, Bleach, 5% Phenol, Gasoline, Kerosene, Sulfuric Acid, Olive Oil
 (h) 5% Sodium Hydroxide and 5% Phenol have caused a "Slight Change"
 (i) No changes after testing the following chemicals: Acetic acid (5%), Hydrochloric acid (5%), Sodiumhydroxid-Solution (10%), Aceton, Petrol, Oil, Fat, Shoe polish (black), Red wine, Milk

- (j) The following products were tested: acetone, coffee, 10% citric acid, 25% caustic soda solution. This last product caused changes on the surface.
 (k) Causes slight damages on the surface
 (l) The following products were tested: acetone, coffee, NaOH, Hydrogenperoxide (H2O2, 3%), Black shoe cream, Citrus acid (solution of 10%)
 (m) Acetone causes grade 1 effects
 (n) The following products were tested: Olive oil, Butter, Condensed milk, Red wine, Petrol, Acetic acid, Soda ash; all cause grade 5 effects (no visible change)
 (o) The following products were tested: Cleaning agent, Cleaning solution; all caused grade 5 effects (no visible changes)
 (p) rate 0 = no observed effect. The following products were tested: 5% acetic acid; vinegar; 70% isopropyl alcohol, Mineral oil, NaOH Sodium oxide, 5% HCl Hydrochloric acid, 5% H2SO4 Sulfuric acid, 5% NaOCl Household ammonia, 5% Phenol disinfectant, Kerosene, Olive oil, Unleaded gasoline

| Test | Standard | Unit | Corkcomfort Floating WRT | Corkcomfort Floating HPS | Corkcomfort Glue-down PU | Corkcomfort Glue-down WRT | Corkcomfort Glue-down HPS |
|--------------------------------------|--|---|--------------------------|---|-----------------------------------|--|---|
| Thermal conductivity | EN 12667 | W/mK | 0,105 | 0,106 | 0,084 | — | 0,117 |
| Heat dissipation | DIN 52614 | KJ/m ² | — | W1: 27 / W10: 111 | W1: 33 / W10: 136 | W1: 27 / W10: 123 | W1: 36 / W10: 184 |
| Wear resistance | EN 660-1 | mm(thickness)/gr.(weight) | — | Thickness loss: 0,050 Weight loss: 0,93 | — | — | Thickness loss: 0,058 Weight loss: 1,12 |
| | EN 660-2 | gr./100 cycles | — | 0,047 | — | — | 0,047 |
| | EN 14354 | Nr. of Cycles | 8800 | — | — | 8800 | — |
| | ASTM D3884 | Cycles/Wheight loss | — | Cycles: 7300 / Wheight loss: 0,00069 grams | — | Cycles: 475 / Wheight loss: 0,189 grams | Cycles: 6800 / Wheight loss: 0,00147 grams |
| | NEMA LD-3 | Cycles & grams/100 cycles | 3100 & 0.0053 | — | — | — | — |
| Accelerated wear test | SATRA TMD:2004 (BS 7976-2: 2002 Pendulum testers) (BS EN 423:2022 - Determination of effect of stains) | Cycles (1,000,000) | — | No stain from red wine. No changes of HPS wear layer thickness Sliding potential not affected. Excellent appearance retention | — | — | No stain from red wine. No changes of HPS wear layer thickness. Sliding potential not affected Excellent appearance retention |
| Castor chair test | EN 425 | Effect | (c) | (c) | — | (c) | (c) |
| Chair leg resistance | EN 424 | Effect | (d) | (d) | (d) | (d) | (d) |
| Residual indentation | EN 433 | mm | -0,02 | -0,02 | -0,45 | -0,02 | -0,02 |
| | ASTM F1914-98 | % loss | — | 10.6 | 26 | — | 22.8 |
| Scratch resistance | EN 438 | N | 1,60 | 4 | — | 1,60 | 4 |
| Scuff resistance | IHD 445 | Method A-%/ Method B-Grade | — | -5,5 0 | — | — | -5,5 0 |
| | Mar test | Grade | — | 0 | — | — | 0 |
| Impact resistance | EN 438 | N | Small ball: 14 | 4 | — | Small ball: 14 | 4 |
| | | mm (high falling) | Big ball: 1300 | — | — | Big ball: 1300 | — |
| Static load limit | ASTM F970-87 | Inch (%) | — | .006 Inch (1.6%) | .005 Inch (1.9%) | — | .000 Inch (0.0%) |
| Static electrical propensity | EN 1815 | Volt | 3100 | 1100 | 900 (antistatic) ASF - class 2 | 1900 | 1500 |
| Electrical resistance | EN 1081 | Ohm | 6x10 ¹² | 3x10 ¹² | 3x10 ¹² | 2x10 ¹² | Rv: 1.19x10 ¹¹ / Rh: 7.3x10 ¹¹ |
| Electrostatic propensity | AATCC 134-1991 | KV | — | NEG 0.4 | — | — | NEG 0.5 |
| Effect of stains | EN 423 | Effect | — | (n) | — | — | (n) |
| | EN 12720 | Effect | — | (o) | — | — | (o) |
| Chemical resistance | ASTM F925-97 | Surf. dulling | (p) rate 0 | (p) rate 0 | — | (p) rate 0 | (p) rate 0 |
| | | Surf. attack | — | No change | — | — | No change |
| | | Color change | — | No change | — | — | No change |
| Stain resistance | AATCC Gray scale | Immediate blotting | — | No stain | — | — | No stain |
| | | Cleaned after 24 hours | — | No stain | — | — | No stain |
| Effect of stains (I) | EN 438, part 2 | Grade 1= surface destruction; 5= no visible changes | 5(m) | 5/5 | — | 5(m) | 5/5 |
| Resistance to cigarette burns | EN 1399 | Burning | — | (k) | — | — | (k) |
| | | Stubbed | — | (k) | — | — | (k) |
| Colour fastness | EN ISO 105-B2 | Rating | 4,5 | (e) | — | 4,5 | (e) |
| | EN ISO 20105-B02 | Blue wool scale | ≥ 6 | — | — | ≥ 6 | — |
| Colour fastness to light (Xenon Arc) | AATCC 16E | Rating 1-5 (5 is the best) | — | 3 | 5 | — | 4.5 |
| Formaldehyde emission | DIN EN 717-1/2 | mg HCHO/hm ² | 2,1 | 0,6 | 0,3 | — | <0,2 |
| | | mg/m ² | 0,01 | 0,01 | 0,01 | — | 0,01 |
| | | ppm | 0,01 | 0,01 | 0,01 | — | 0,01 |
| | | Class | E1 | E1 | E1 | — | E1 |
| PCP (pentachlorophenol) | CEN/TR 14823 (hd-W 409) | mg/Kg | 0,5 (PCP free) | <0,3 (PCP free) | n.d (PCP free) | — | n.d (PCP free) |
| VOC emission | CEN ENV 13419 (ECA-IAQ) | Ecological evaluation | Positive | Positive | Positive | Positive | Positive |



AMORIM

Excellence in flooring



GB Amorim Flooring UK, +44 1 403 710 001info.ar.uk@amorim.com
NL/BE/LU Amorim Benelux B.V., +31 166 604 111info.ar.nl@amorim.com
DE Amorim Deutschland GmbH, +49 4221 59 301germany.ar.de@amorim.com
AT Amorim Flooring Austria, +43 1 545 16 51 0austria.ar.de@amorim.com
CH Amorim Flooring (Switzerland) AG, +41 41 726 20 20switzerland.ar.ch@amorim.com
FR Amorim Flooring France No Azur, 0810 811 178info.ar.fr@amorim.com
PT/ES Amorim Revestimentos S.A., +351 22 747 5600geral.ar@amorim.com
CN Amorim Revestimentos - Beijing, +86 10 58672159amorimre@macau.ctm.net
JP Amorim Japan Corporation, +81 3 5216 3735otoiawase-ar@amorim.co.jp
DK/FI/NO/SE Amorim Flooring Nordic A/S, +45 44 681 900mail@amorim-flooring.dk
PL Dom Korkowy, Sp. z o.o., +48 12 637 9639krakow@domkorkowy.pl
US/CA Amorim Flooring North America, +1 410 553 6062info@amorimna.com
Others Amorim Revestimentos, S.A., +351 22 747 5600geral.ar@amorim.com

